

LIVE UNITED

# Health Pathways

Promoting integration and collaboration between the health care & homeless service systems in LA County

July 28, 2020



# Agenda

---

- **Inform** multi-system partners about COVID-19 challenges
- **Coordinate alignment** between health & homeless systems
- **Focus** on the chronic health needs of PEH

## 1. Level Setting & Orientation

- i. Major Developments since the last call (PRK, MSEP, Unsheltered)

## 2. Health Pathways Expansion Grant Awardees Announcement and Q & A Discussion

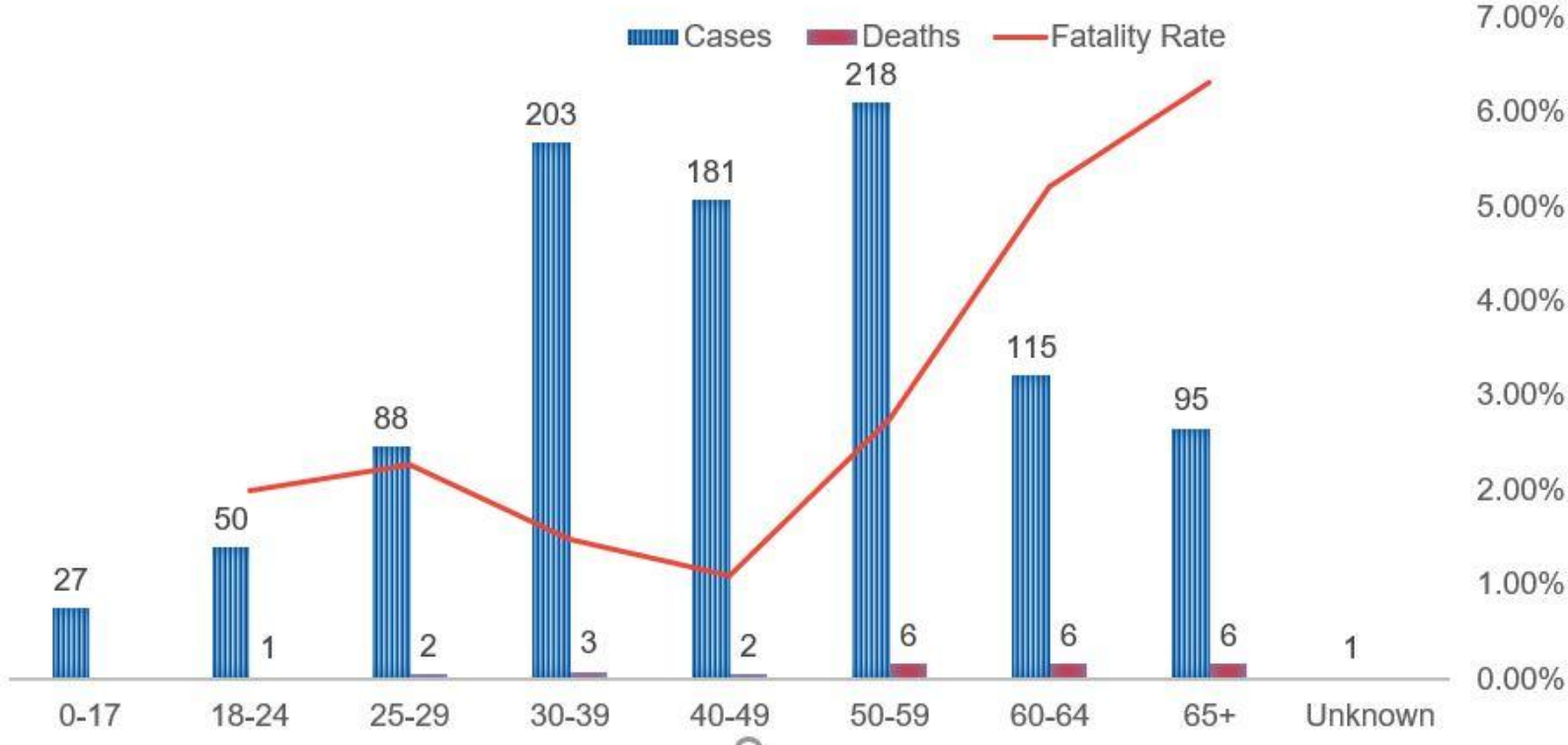
- i. Anali Ray, Chief of Strategy and Programs Officer, Saban Community Clinic
- ii. Nathan Sheets, Executive Director, The Center

## 3. Introduction to Senior Strategy

- i. Older Adult Homelessness in LA County--how does everything stitch together to support older adults?

# COVID-19 Situation Update

## COVID-19 CASES AND DEATHS IN LA COUNTY



### Confirmed Cases among PEH

- 989 cases
- 158 Hospitalized (16%)
- 26 Deaths (2.6%)
  - 7% for those age 65+

### PRK

- 35 sites serving ~4,000 clients
- One new site in McArthur Park has been added since our last meeting

### MSEP

- 9 shelter sites serving 191 clients
  - 5 sites under quarantine
- 6 trailer sites serving 253 clients

### Isolation/Quarantine

- 4 sites serving 224 clients

### Unsheltered

- Rate of infection among the unsheltered is increasing (currently 41% of positive cases among PEH, up from 35% in early June)

# Coordination Call Update

---

Since we last met, there have been some changes to the call frequency of some of the major coordination calls being hosted by different partners. Some of those changes are:

- CCALAC: This weekly call has been cancelled, instead CCALAC will hold a space during their monthly Homeless Health Advisory Committee for external partners to join.
- Street Medicine: This call continues to be bi-weekly but now runs from 3-4pm on the same Tuesday as the Health Pathways coordination call.
- City Health Care Call: This call is now weekly on Mondays at 11am.

# Health Pathways Expansion Awardees

# Health Pathways Expansion

A collaborative effort to expand health services for people experiencing homelessness led by California Community Foundation and the United Way of Greater Los Angeles, with investment support from Cedars-Sinai, L.A. Care Health Plan, Providence, and UniHealth

- We received 26 applications which made for a competitive process
- 16 grantees were selected; major considerations included:
  - Countywide coverage, depth of experience and expertise in serving homeless population, readiness for quick expansion, and comprehensive care models
- Expansion & Enhancement
  - 8 new clinics will be providing onsite medical care for PEH; 8 will be able to continue providing onsite services
  - PEH in 12-15 PRK sites will now have access to onsite medical care
  - PEH in 1 non-PRK shelter and 1 trailer site will also be served

# HPE Awardees

Homeless Health Care Los Angeles (SPA 4)	Central City Community Health Center (SPA 6)
Saban Community Clinic (SPA 4)	Central Neighborhood Health Foundation (SPA 6, 7, 8)
St. John's Well Child and Family Center (SPA 4, 6)	Community Health Alliance of Pasadena (SPA 3)
Center for Family Health and Education (SPA 2, 3, 8)	East Valley Community Health Center (SPA 3)
Northeast Valley Health Corporation (SPA 2)	JWCH Institute (SPA 1, 3, 4, 6, 7)
Harbor Community Clinic (SPA 8)	Los Angeles Christian Health Centers (SPA 4, 6, 7)
Tarzana Treatment Centers (SPA 2)	Southern California Health & Rehabilitation Program (SPA 6)
Venice Family Clinic (SPA 5)	University of Southern California Street Medicine (SPA 3, 4)

LIVE UNITED

# Congratulations to HPE Awardees!

## Next Steps:

- Finalizing PRK Site Assignment(s)
- Kick-Off Meeting TBD
  - Resource Guide & additional TA



LIVE UNITED

# Q&A Discussion Speakers

- Arnali Ray, Chief of Strategy and Programs Officer, Saban Community Clinic
- Nathan Sheets, Executive Director, The Center

## Homeless service and clinic partnership

---

Saban Community Clinic and The Center, operating in SPA 4 and serving the Hollywood area, have had a long-standing partnership to address the needs of PEH in their community. The Center is currently a PRK site operator and Saban Community Clinic will be starting services at PRK soon.

1. What has been The Center's experience collaborating with GoRN and other providers and stakeholders at the PRK site so far?
2. What plans does Saban have for PRK, including timing, staffing, operations and other collaboration?
3. How has your partnership evolved from pre-COVID to now? Any new challenges?
4. What are some lessons and/or best practices that you will carry over to PRK?

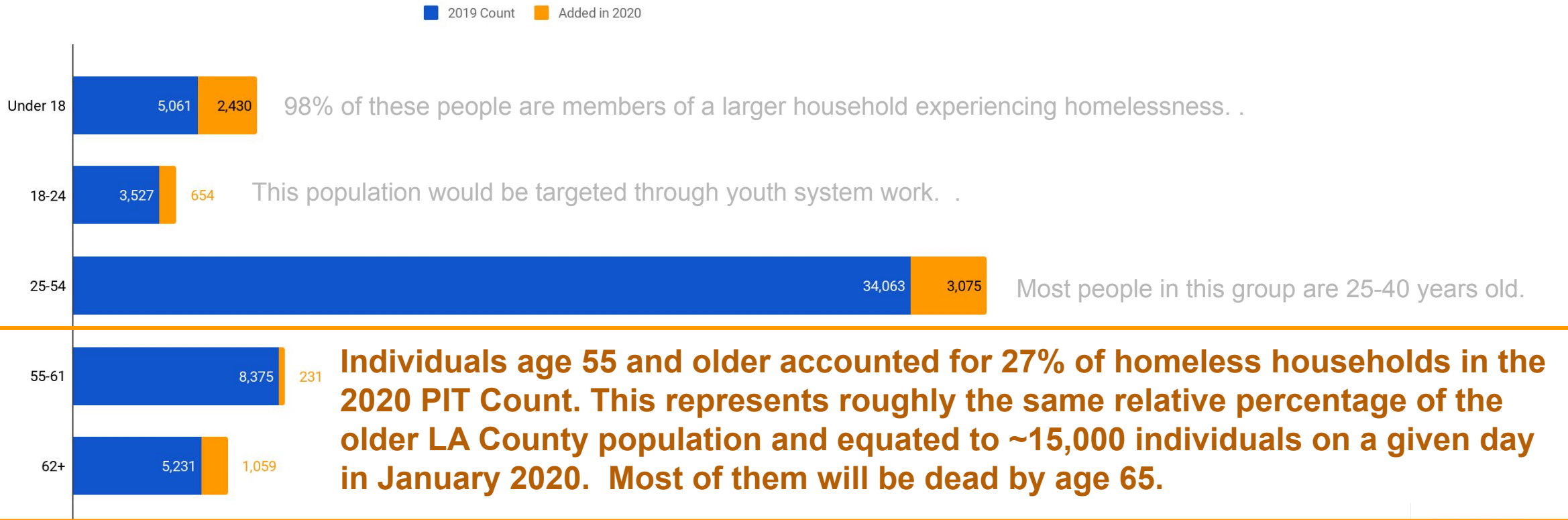
LIVE UNITED

# Introduction to Senior Strategy

# Older Adult Homelessness in LA County

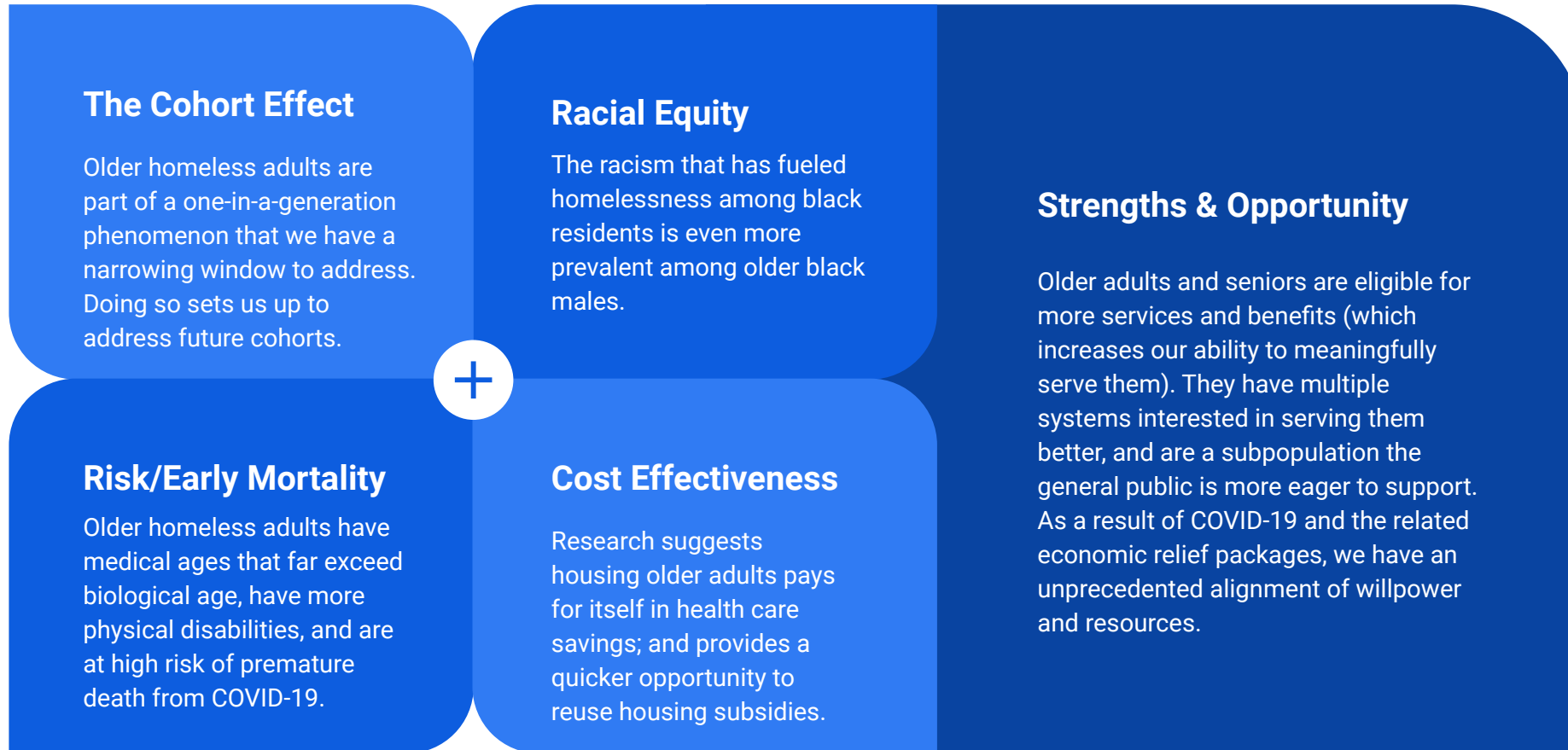
## How old is the LA County homeless population?

2019 PIT Count By Age for the Los Angeles County Continuum of Care



# Why focus on homeless seniors?

---



# How does everything stitch together to benefit older adults and seniors?



## Key Questions:

- How many older adults and seniors can we prevent and end homelessness on a normal day with our existing resources?
- It is clear that the other projects target the 65+ population, but what are we doing for those age 55 and older? How does all of this relate to CES?
- How do each of these plans account for each other to ensure we aren't duplicating efforts or working at cross purposes? How do we ensure MediCal funding is available for this purpose?
- How will these plans be led and managed in a coordinated way?

# Partners in Aging Services

Homeless Partners highlighted in blue, Older Adult Anchor organizations are highlighted in green

AARP  
 Altamed Health Service  
 Alzheimer's Los Angeles  
 Armenian Relief Society  
 Ascencia  
 Avalon Medical Development Corporation  
 Azusa Pacific University  
 Bet Tzedek Justice for All  
 Blue Shield Promise Health Plan  
 Brandman Centers for Senior Care PACE of the LA  
 Jewish Home  
 California Community Foundation (CCF)  
 California Policy Lab  
 Cedars-Sinai Hospital  
 Chinatown Service Center  
 City of Alhambra  
 City of Azusa  
 City of Burbank  
 City of Cerritos  
 City of Claremont  
 City of Culver  
 City of El Monte  
 City of Gardena  
 City of Glendale  
 City of Long Beach  
 City of Los Angeles (Dept of Aging)  
 City of Norwalk  
 City of Pomona  
 City of San Fernando  
 City of South El Monte

City of Torrance  
 City of West Covina  
 Community Coalition (CoCo)  
 Corporation for Supportive Housing (CSH)  
 Downtown Women's Center  
 Grandparents As Parents, Inc.  
 Helping Hands Senior Focus  
 Housing Works  
 Human Services Association  
 Huntington Senior Care Network  
 Illumination Foundation  
 Independence at Home  
 Jewish Family Service  
 Just Rite Community Programs Inc.  
 Justice in Aging  
 Kingdom Causes Bellflower  
 Korean Health Education, Info. & Resource Center  
 L.A. LGBT Center  
 LA Care Health Plan  
 LA Family Housing  
 Legal Aid Foundation of Los Angeles  
 Life Steps USA  
 LifeSTEPS  
 Linc Housing  
 Los Angeles County  
 County Executive Office  
 Department of Health Services  
 Department of Mental Health  
 Department of Public Social Services (DPSS)  
 Workforce Development Aging & Community Services (WDACS)

Little Tokyo Service Center (LTSC)  
 Los Angeles County Metropolitan Transportation Authority (LACMTA)  
 Los Angeles Homeless Services Authority (LAHSA)  
 Menorah Housing Foundation  
 Office of Samoan Affairs of California  
 Oldtimers Foundation  
 ONEGeneration  
 Partners in Care Foundation  
 People Assisting the Homeless (PATH)  
 Rio Hondo College Associate Degree Nursing Program  
 San Fernando Valley Community Mental Health Center  
 San Fernando Valley Intercommunity Council (VIC)  
 San Gabriel Valley YWCA  
 Santa Clarity Valley Committee on Aging  
 Senior Care Action Network (SCAN) Health Plan  
 Shelter Partnership  
 Skid Row Housing Trust  
 Southeast Area Social Service Funding Authority (SASSFA)  
 Special Services for Groups (SSG)  
 St. Barnabas Senior Services  
 State of California  
 TELACU  
 Telecare LAOA  
 The Center at Blessed Sacrament  
 The Salvation Army  
 Torrance South Bay Family YMCA  
 U.S. Department of Veterans Affairs  
 University of California at Los Angeles (UCLA)  
 University of Southern California  
 Volunteers of America  
 Ward Economic Development  
 Watts Labor Community Action Committee (WLCAC)  
 Whittier First Day  
 Wise & Health Aging

LIVE UNITED

# Questions & Comments

Reach out to our team:

Dalma Diaz ([ddiaz@unitedwayla.org](mailto:ddiaz@unitedwayla.org))

Natalia Torregrosa ([ntorregrosa@unitedwayla.org](mailto:ntorregrosa@unitedwayla.org))

Carter Hewgley ([chewgley@unitedwayla.org](mailto:chewgley@unitedwayla.org))

Julie Hudman ([jhudman@vikasaholdings.com](mailto:jhudman@vikasaholdings.com))

wn





LIVE UNITED

# Background Slides

# Why is the United Way convening this call?

---

- UWGLA uses our convening power to bring multi-sector partnership together to benefit those experiencing homelessness
- COVID-19 spurred massive and rapid systems change in both homeless and health services
- In call after call, we keep hearing about amazing ad-hoc integration with the health sector
- System-level coordination today can forever share the future of health care delivery for those experiencing homelessness

**Dalma Diaz**  
([ddiaz@unitedwayla.org](mailto:ddiaz@unitedwayla.org))

**Natalia Torregrosa**  
([ntorregrosa@unitedwayla.org](mailto:ntorregrosa@unitedwayla.org))

**Carter Hewgley**  
([chewgley@unitedwayla.org](mailto:chewgley@unitedwayla.org))

**Julie Hudman**  
([jhudman@vikasaholdings.com](mailto:jhudman@vikasaholdings.com))  
*Health Systems Expert Advisor*

# Purpose

- **Inform** multi-system partners about COVID-19 challenges
- **Coordinate alignment** between health & homeless systems
- **Focus** on the chronic health needs of PEH

